



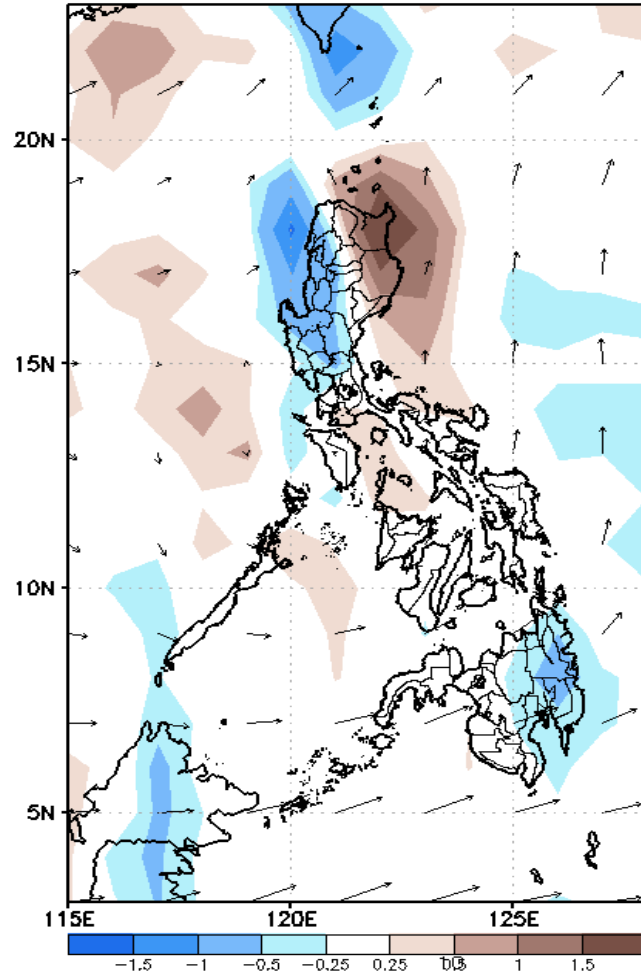
Week 1 & Week 2 Forecast for the Philippines using GEFS Model



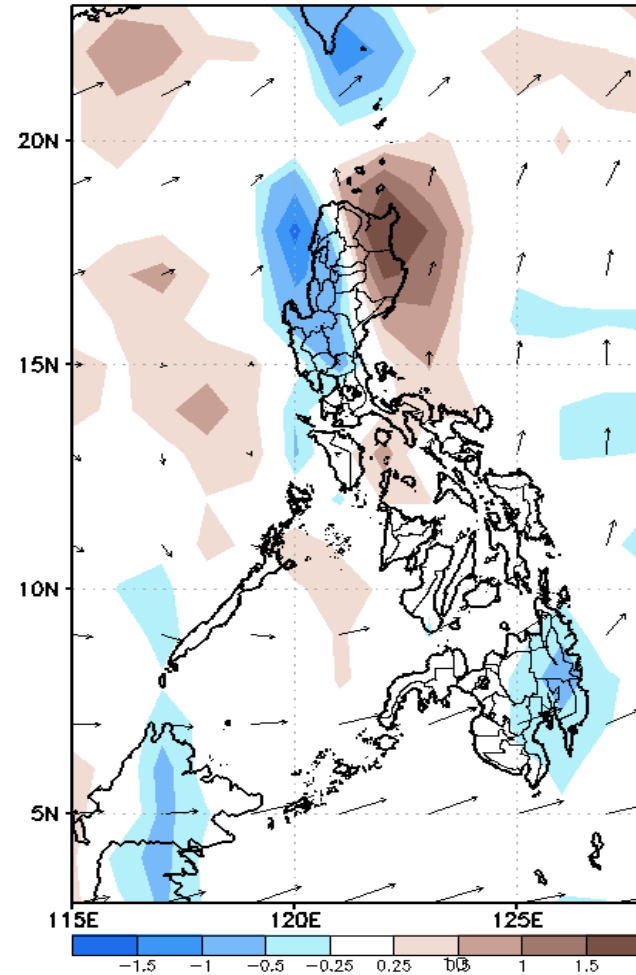
GEFS Week-1 Forecasts: Divergence & Wind Anomaly

Week 1: December 17-23, 2020

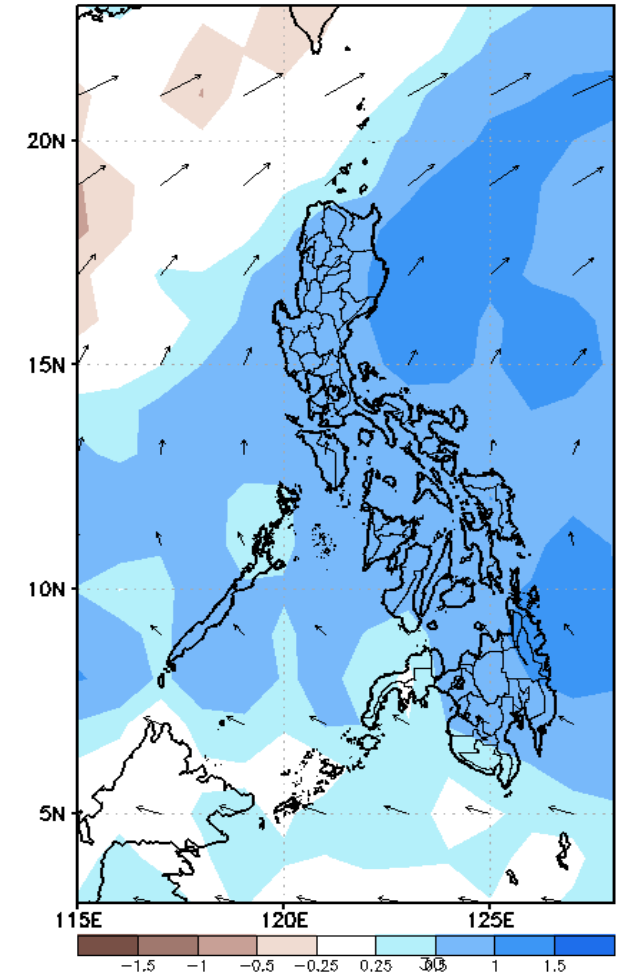
GEFS Week-1 850-hPa Divergence and Wind Anom
Valid: 20201217 - 20201223



GEFS Week-1 700-hPa Divergence and Wind Anom
Valid: 20201217 - 20201223



GEFS Week-1 200-hPa Divergence and Wind Anom
Valid: 20201217 - 20201223

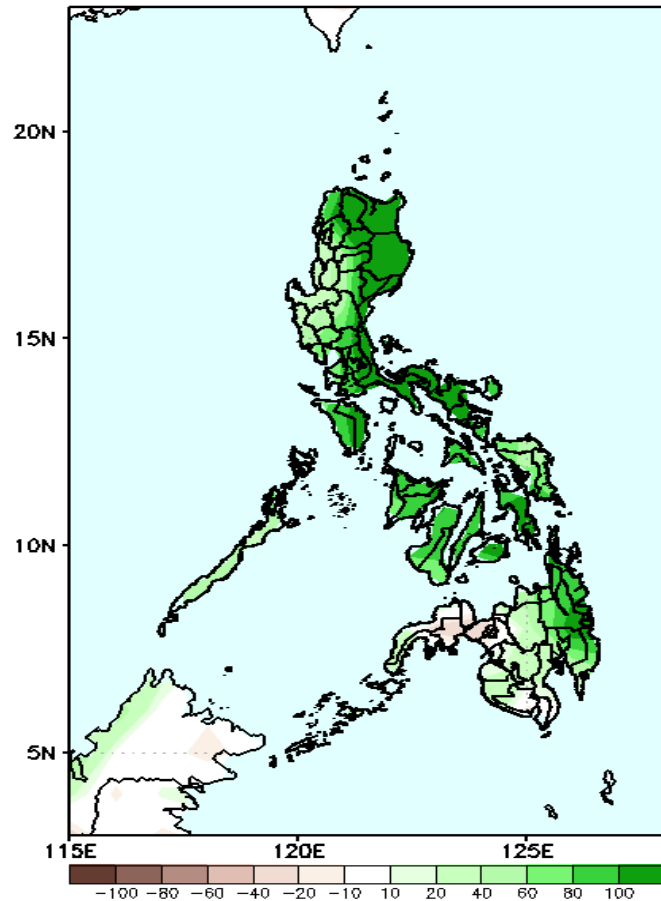


Upper and low level Divergence suggest likelihood of precipitation in most parts of the country. Northeast Monsoon affecting most parts of Luzon while easterlies affecting Visayas and Mindanao during the forecast period.

Precipitation Anomaly and Exceedance Probability > 25/50 mm

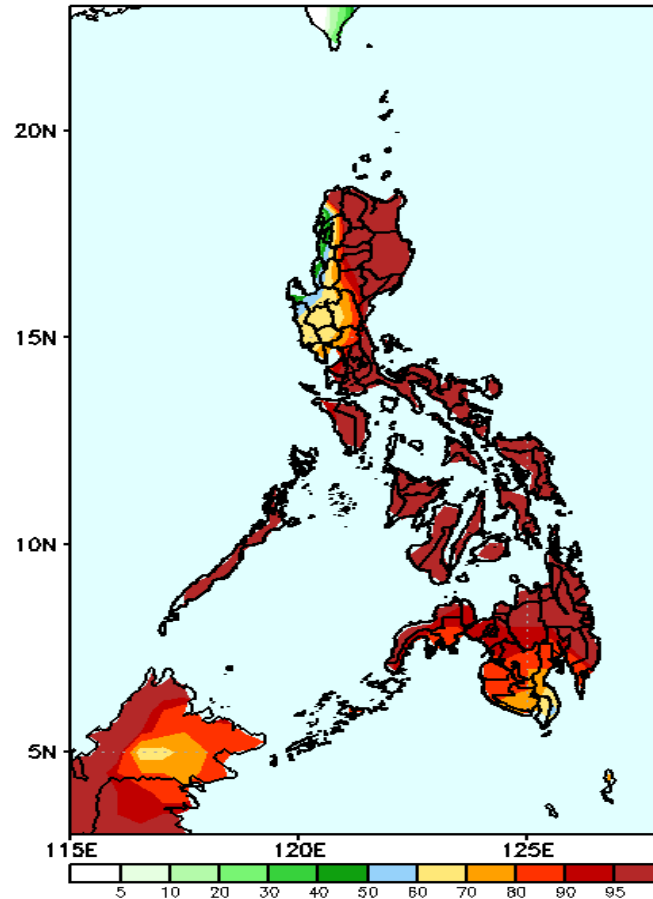
Week 1: December 17-23, 2020

GEFS Week-1 Precip Anomaly
Valid: 20201217 - 20201223



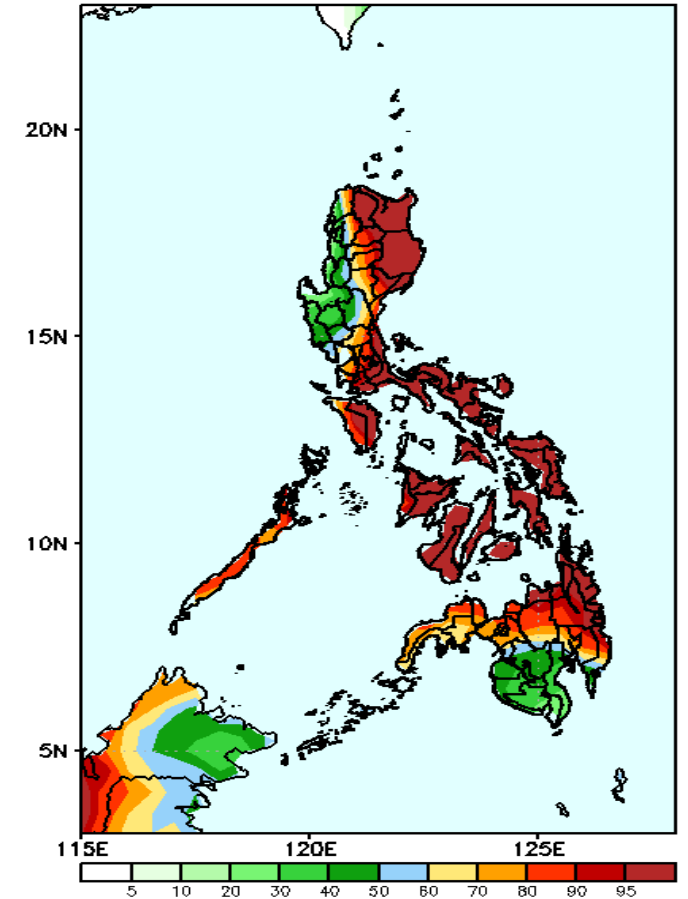
Increase of rainfall up to 100mm is expected in most parts of the country.

GEFS Week-1 Exceedance Prob. > 25mm
Valid: 20201217 - 20201223



High probability of rainfall to exceed 25mm in most parts of the country except in some areas in Region 1 during the forecast period.

GEFS Week-1 Exceedance Prob. > 50mm
Valid: 20201217 - 20201223

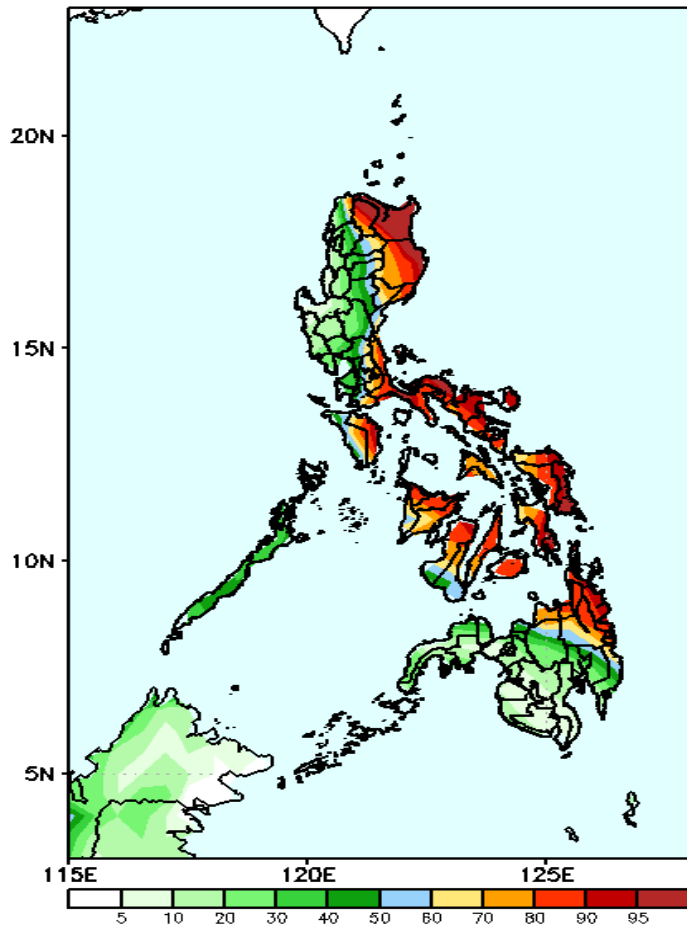


High probability of rainfall to exceed 50mm in most parts of the country except in Region 1, Central Luzon and southern Mindanao during the forecast period.

Exceedance Probability > 100/150/200 mm

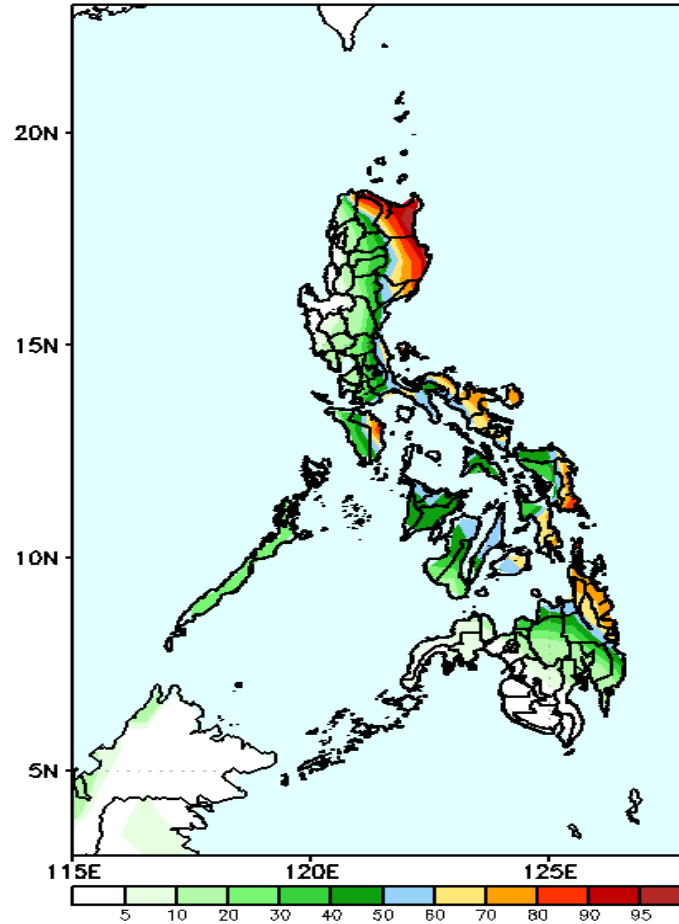
Week 1: December 17-23, 2020

GEFS Week-1 Exceedance Prob. > 100mm
Valid: 20201217 - 20201223



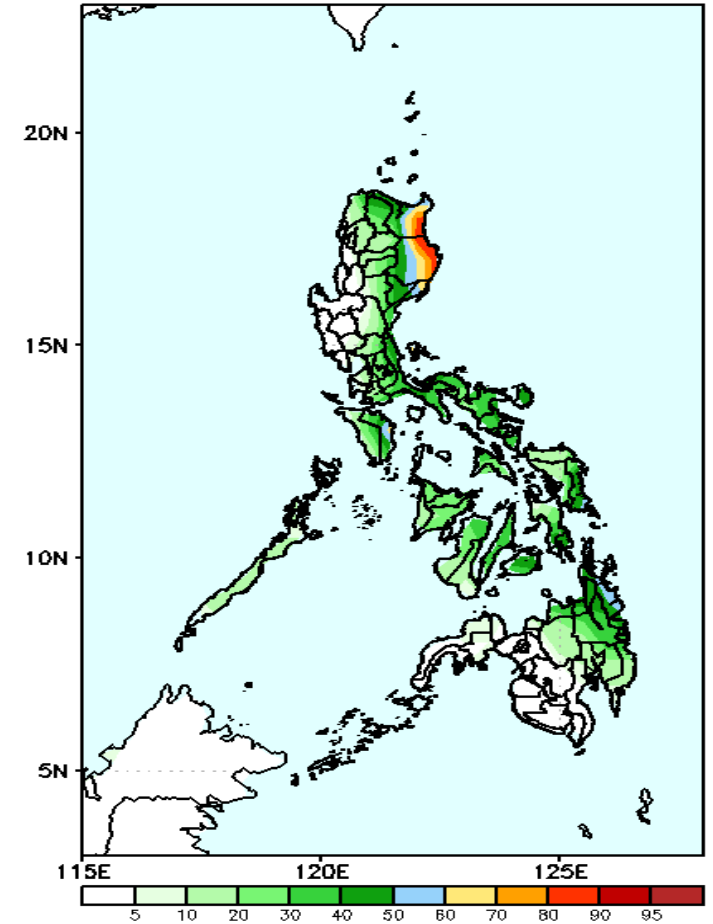
High probability of rainfall to exceed 100mm in Apayao, most parts of eastern Luzon, Bicol Region, Visayas and CARAGA Region while less likely for the rest of the country during the forecast period.

GEFS Week-1 Exceedance Prob. > 150mm
Valid: 20201217 - 20201223



Less probability of rainfall to exceed 150mm in most parts of the country except in Apayao, Cagayan, Isabela, Bicol Region, Capiz, southern Leyte, eastern Samar and CARAGA Region where there is high probability during the forecast period.

GEFS Week-1 Exceedance Prob. > 200mm
Valid: 20201217 - 20201223

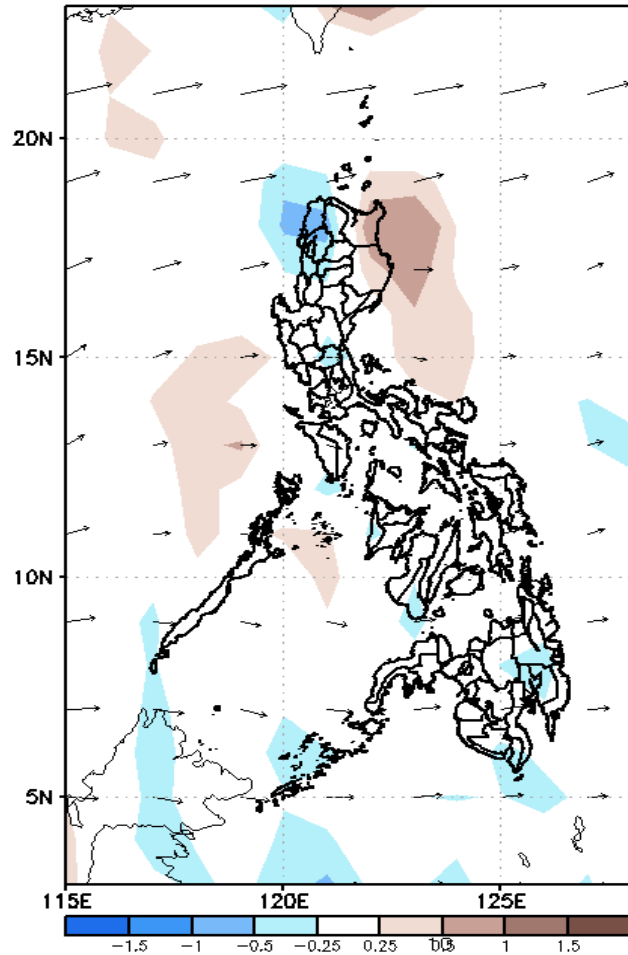


Less probability of rainfall to exceed 200mm in most parts of the country except in Cagayan & Isabela where there is 70-95% probability during the forecast period.

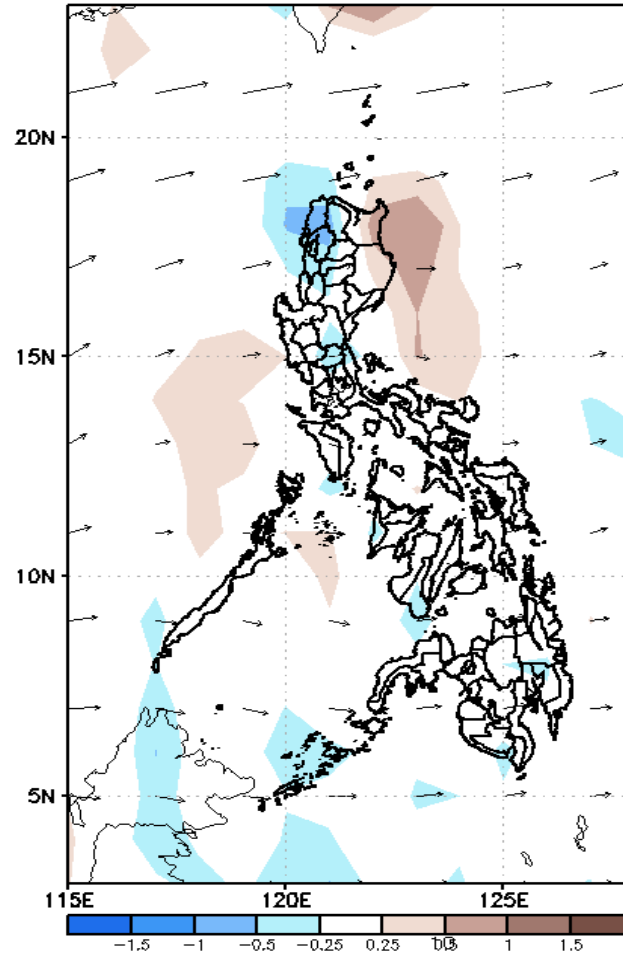
GEFS Week-2 Forecasts: Divergence & Wind Anomaly

Week 2: December 24-30, 2020

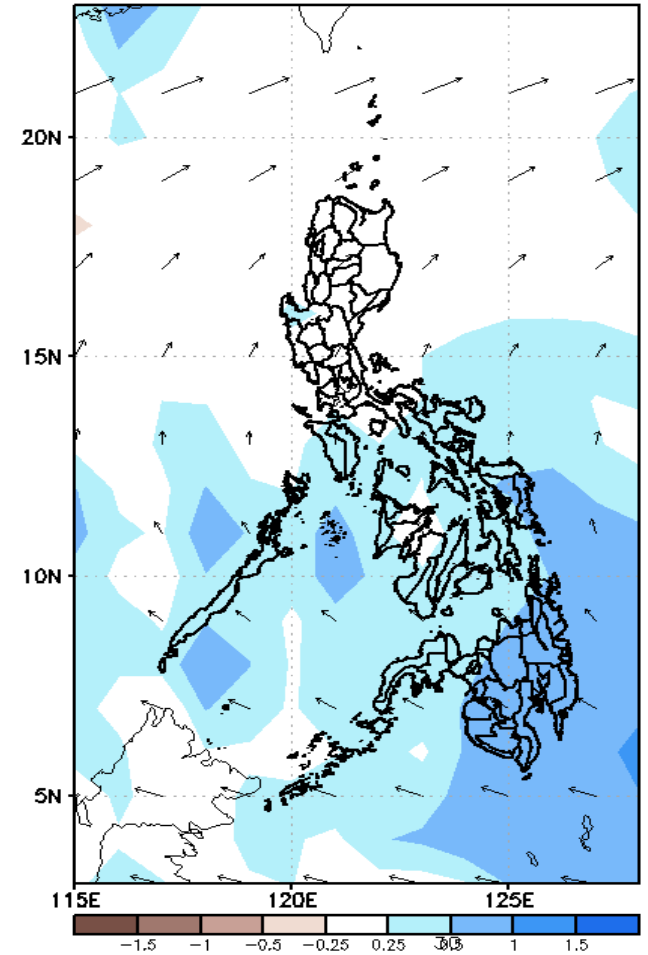
GEFS Week-2 850-hPa Divergence and Wind Anom: Valid: 20201224 - 20201230



GEFS Week-2 700-hPa Divergence and Wind Anom: Valid: 20201224 - 20201230



GEFS week-2 200-hPa Divergence and Wind Anom: Valid: 20201224 - 20201230



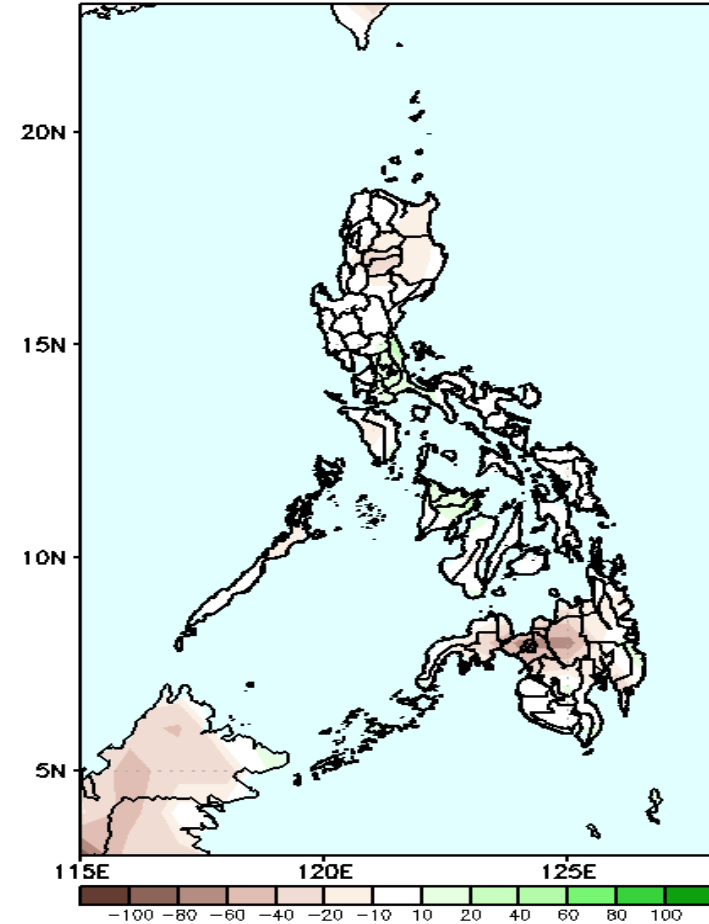
Upper and low level Divergence suggest likelihood of precipitation in Ilocos provinces, Southern Luzon, MIMAROPA and most parts of Visayas and Mindanao. Northeast Monsoon affecting most parts of eastern Luzon while easterlies affecting Visayas and Mindanao during the forecast period.



Precipitation Anomaly and Exceedance Probability > 25/50 mm

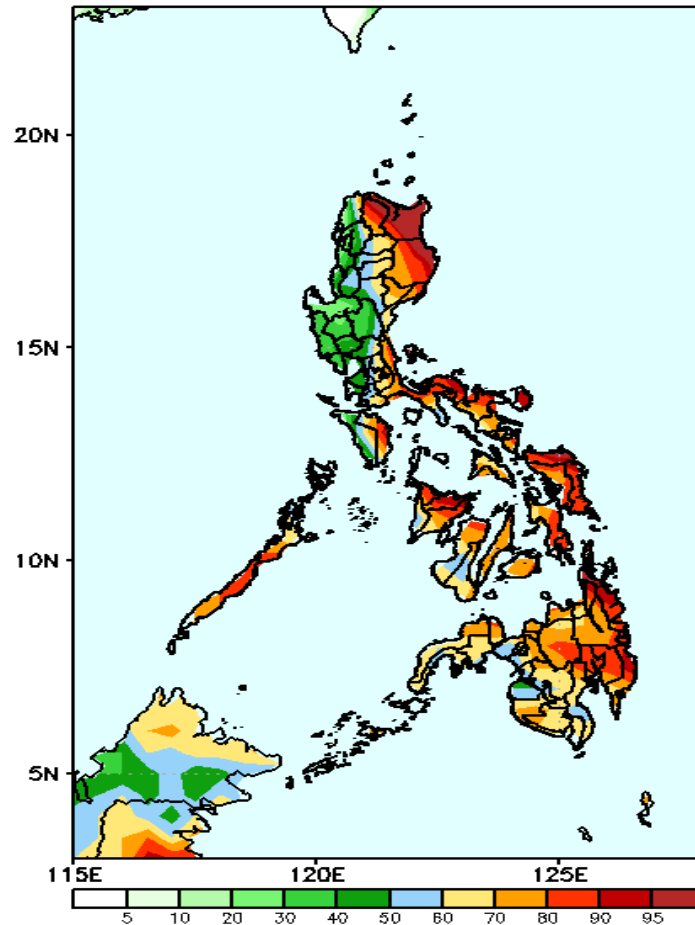
Week 2: December 24-30, 2020

GEFS Week-2 Precip Anomaly
Valid: 20201224 - 20201230



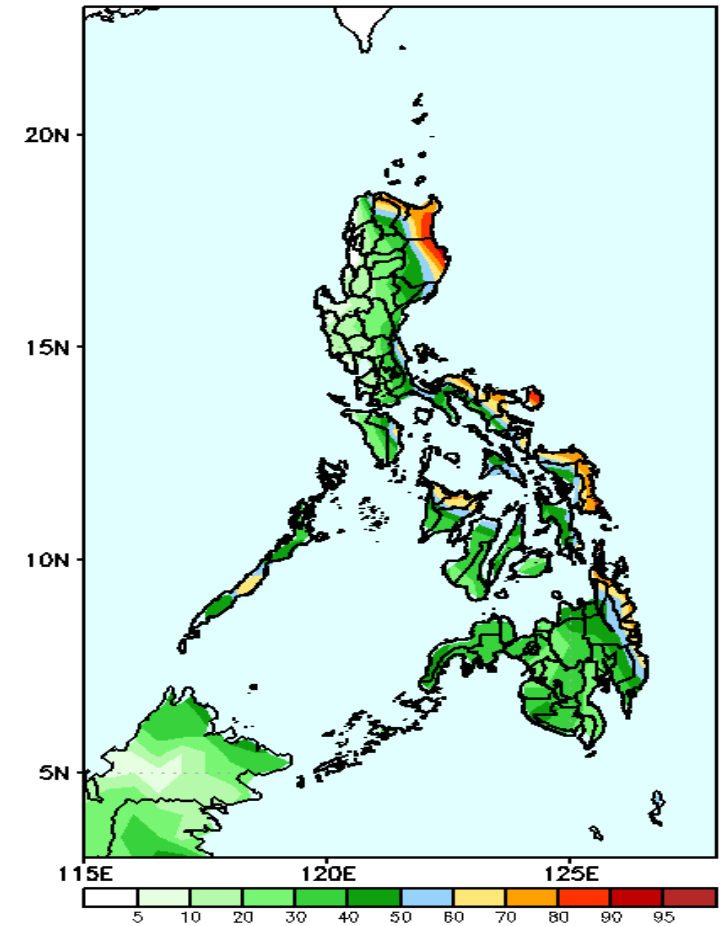
Rainfall deficit of up to 60mm in northern Mindanao is expected during the forecast period.

GEFS Week-2 Exceedance Prob. > 25mm
Valid: 20201224 - 20201230



High probability of rainfall to exceed 25mm in most parts of the country is expected except in the western parts of Luzon during the forecast period.

GEFS Week-2 Exceedance Prob. > 50mm
Valid: 20201224 - 20201230

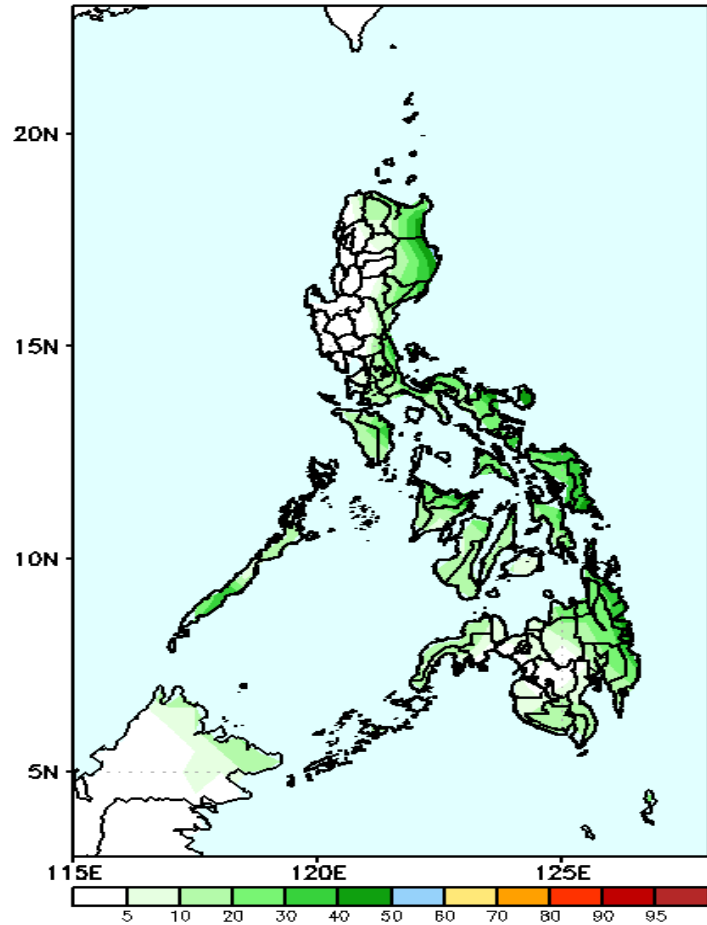


70-95% probability of rainfall to exceed 50mm in Apayao, Cagayan, Isabela, Bicol Region, Capiz, eastern Samar and CARAGA while less likely for the rest of the country during the forecast period.

Exceedance Probability > 100/150/200 mm

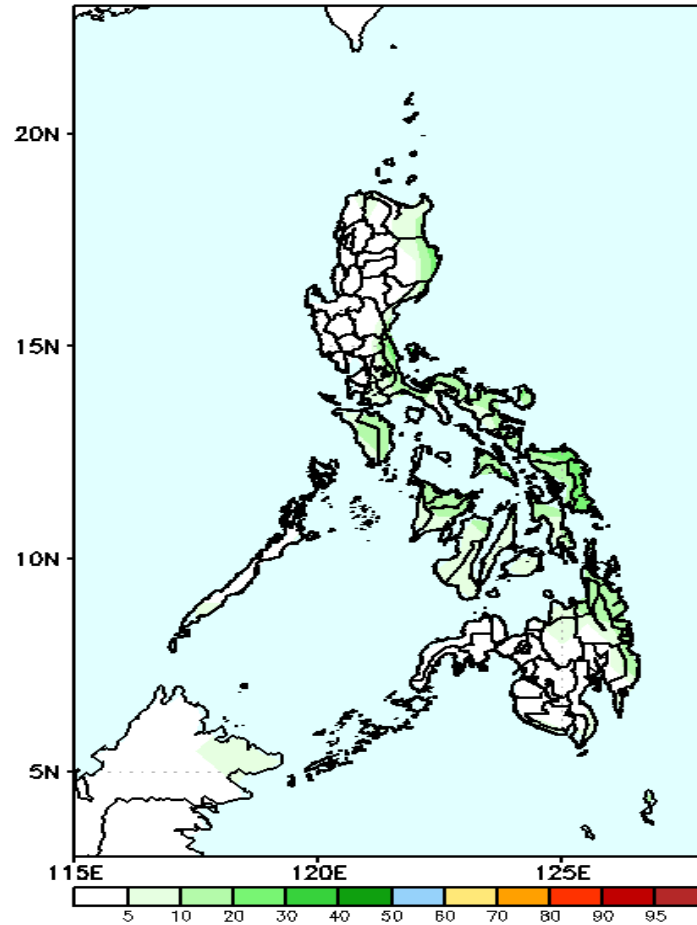
Week 2: December 24-30, 2020

GEFS Week-2 Exceedance Prob. > 100mm
Valid: 20201224 - 20201230



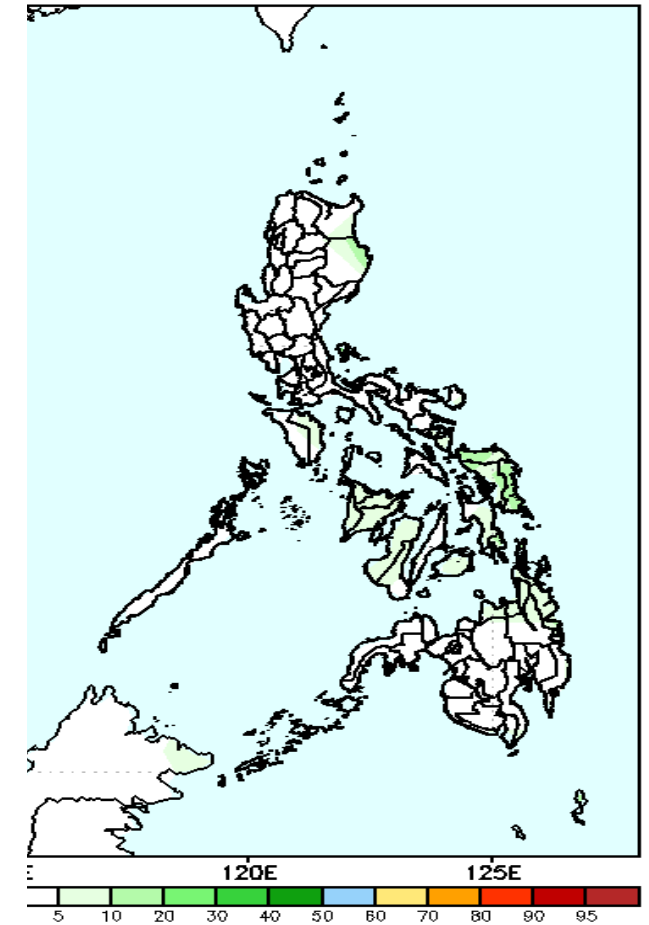
Less probability of rainfall to exceed 100mm in most parts of the country is expected during the forecast period.

GEFS Week-2 Exceedance Prob. > 150mm
Valid: 20201224 - 20201230



Less probability of rainfall to exceed 150mm in most parts of the country during the forecast period.

Week-2 Exceedance Prob. > 200mm
Valid: 20201224 - 20201230

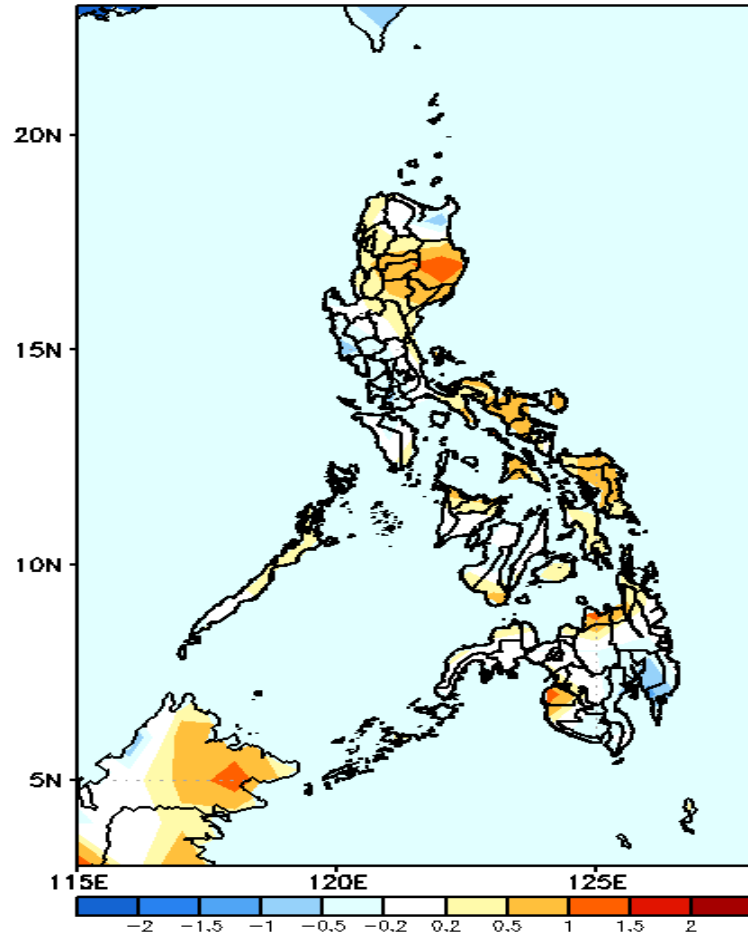


Less probability of rainfall to exceed 200mm in most parts of the country during the forecast period.



GEFS Week-1 & 2 Forecasts: T2m Anomaly

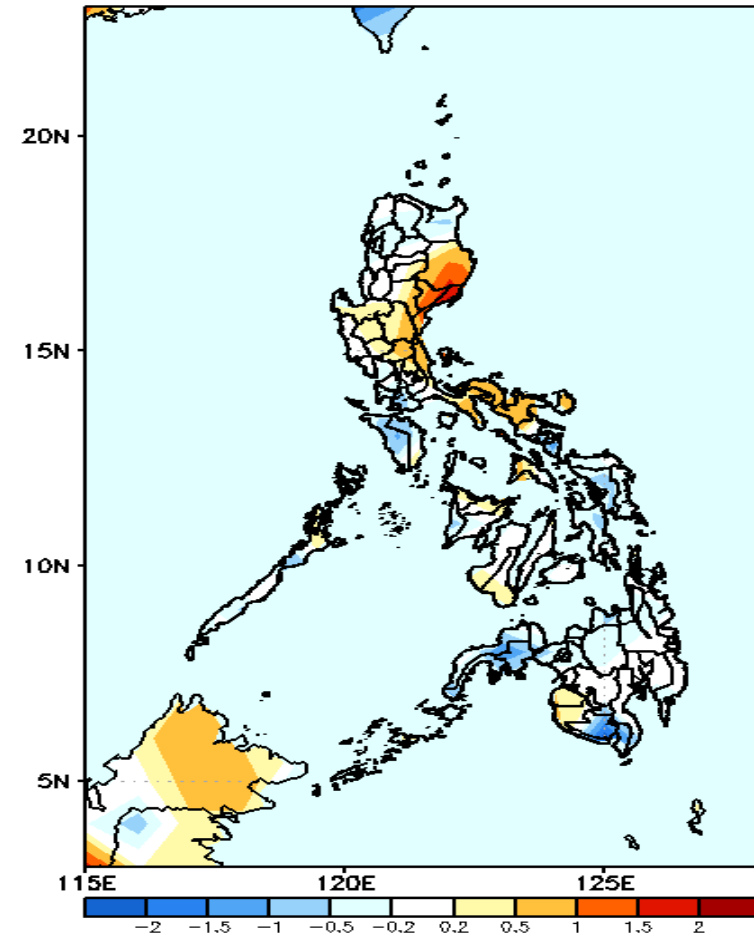
GEFS Week-1 T2m Anomaly
Valid: 20201217 - 20201223



2m Temperature Week 1: December 17-23, 2020

Slightly warmer to warmer than average surface air temperature is expected in most parts Cagayan Valley and Cordillera Region, in Bicol Region, eastern Visayas and Misamis Oriental while average to slightly cooler average temperature for the rest of the country.

GEFS Week-2 T2m Anomaly
Valid: 20201224 - 20201230



2m Temperature Week 2: December 24-30, 2020

Slightly warmer to warmer than average surface air temperature is expected in most parts of eastern Luzon and western Visayas while the rest of the country will likely receive average to cooler than average temperature.